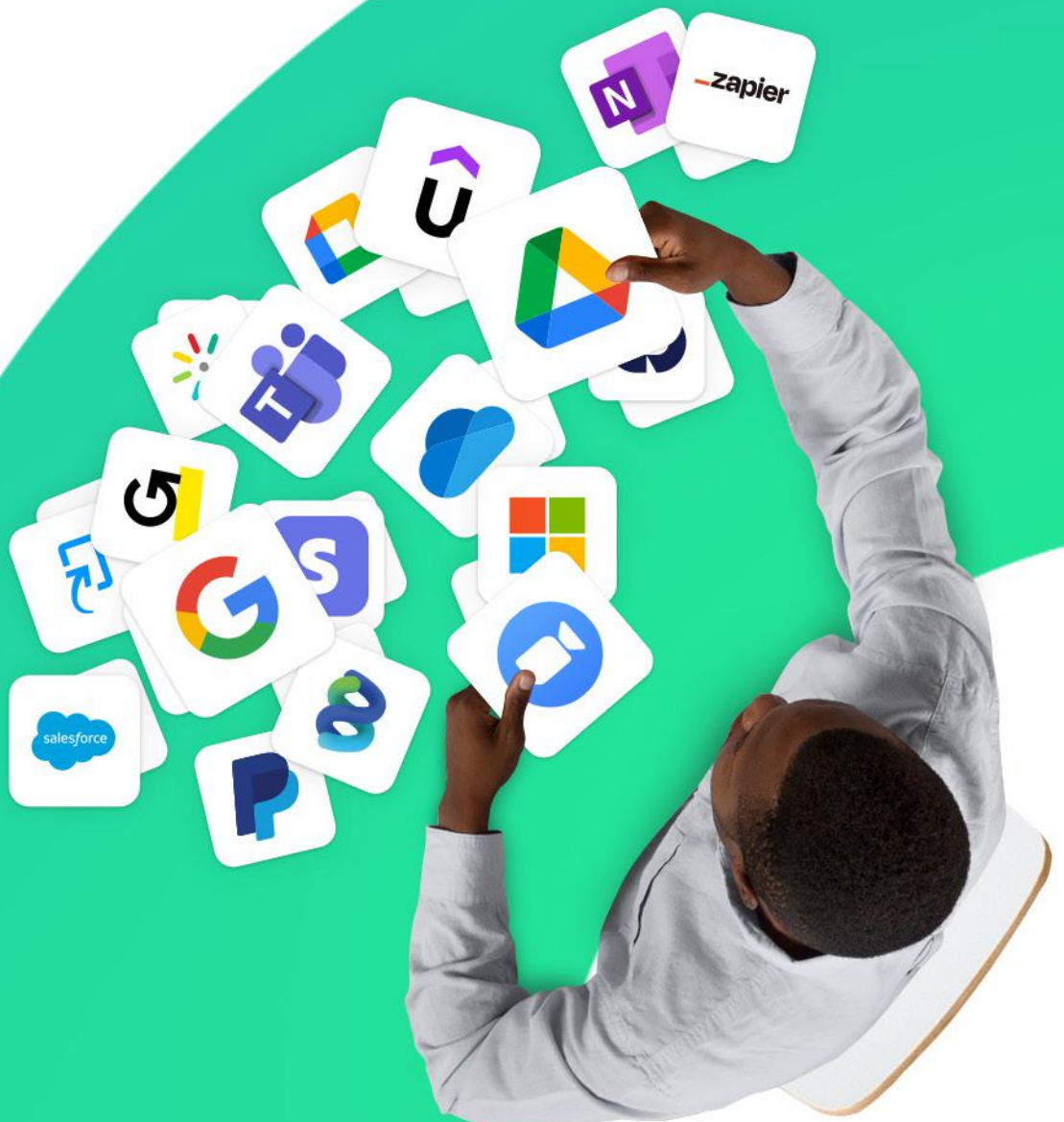


Integration options



At a glance

CYPHER Learning® integration options	3
Standard Integrations	4
Built-In	4
Zapier	5
API	6
Workflow Integrations with Connect	7



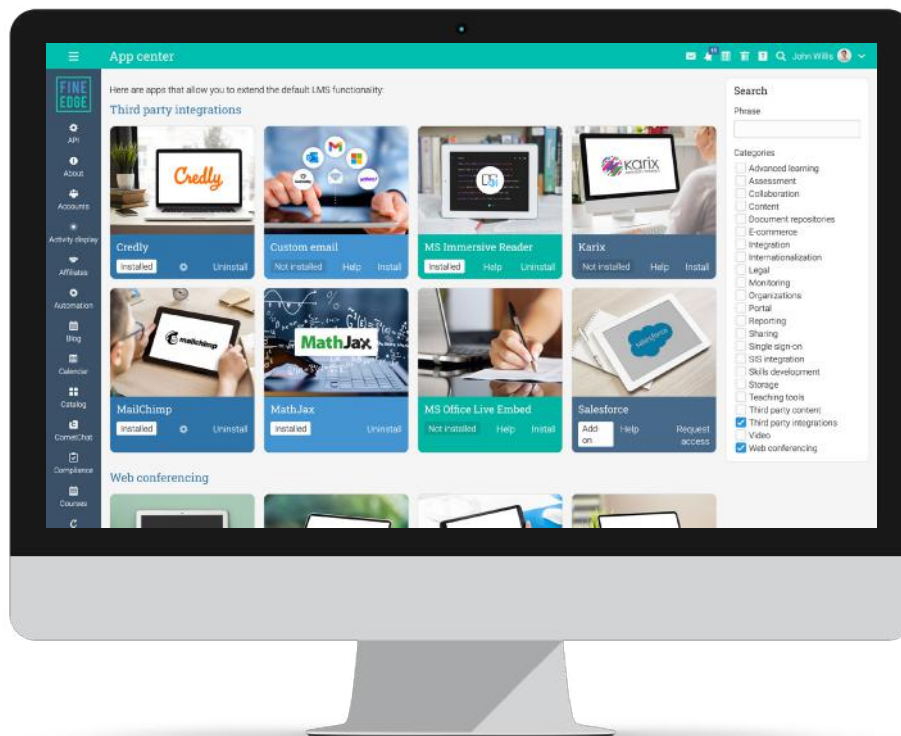
CYPHER Learning enables organizations to seamlessly and comprehensively use the CYPHER modern learning platform with thousands of applications and services using standard and workflow integrations.

CYPHER Learning integration options

Visibility into your organization's overall skills inventory and level of employee engagement and development is critical for success and growth. It's also a key priority for supervisors and the HR team. In today's remote and hybrid work learning environments, integration is critical to building competency, improving productivity, and ensuring that employees are improving their skill sets

However, simple workflow integrations like connecting L&D and HR systems that foster bi-directional communication, sync employee progress to their professional development path, and granularly track success metrics are often made difficult because legacy LMS technologies weren't designed to enable this degree of integration interconnectivity without a huge investment of time and money on the part of the customer.

Supporting a variety of integration options based on unique customer requirements, CYPHER Learning enables organizations to seamlessly and comprehensively use the CYPHER modern learning platform with thousands of applications and services using standard and workflow integrations.



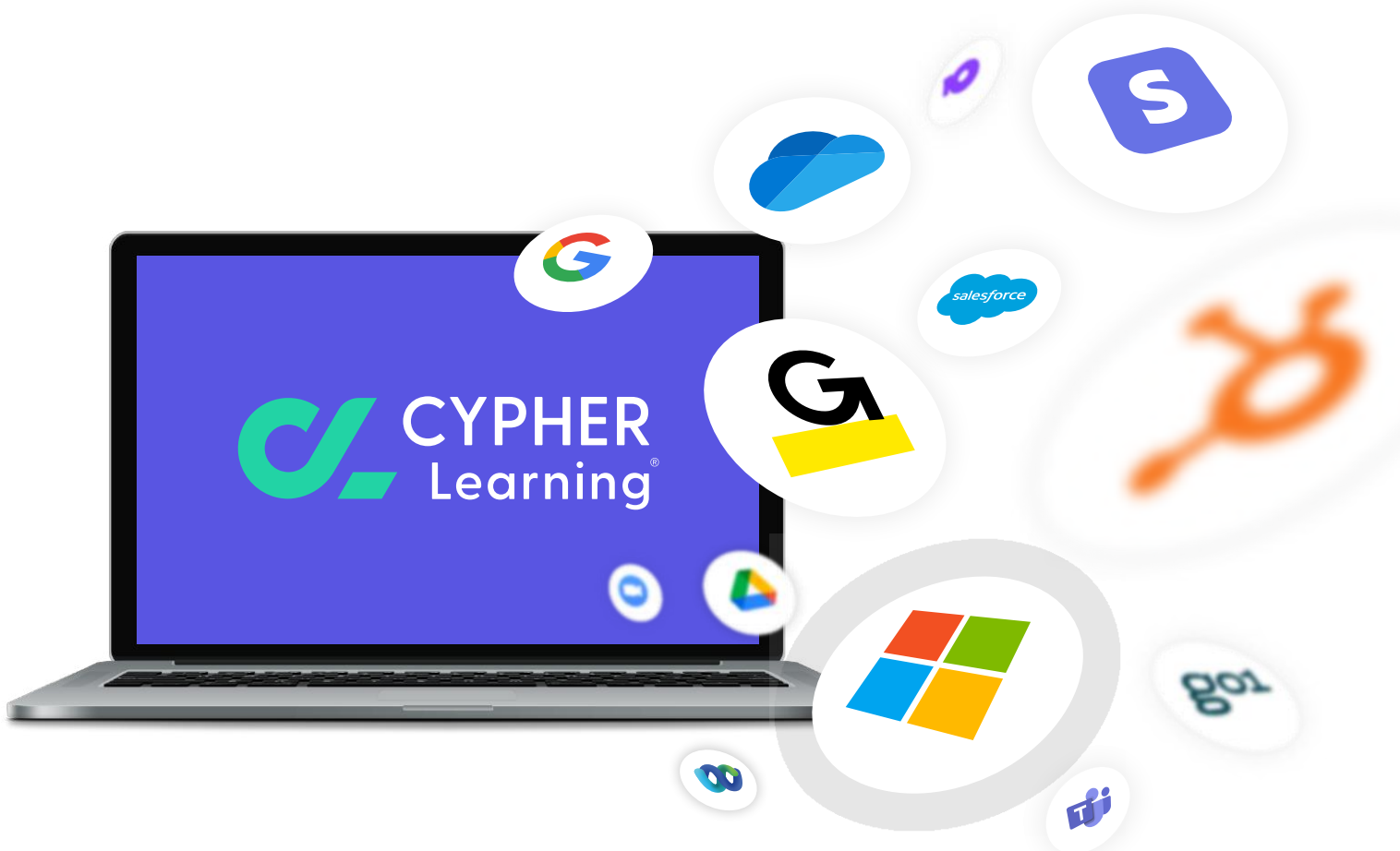
Standard Integrations

Built-In

CYPHER integrates with the most popular and useful systems including Google Drive, Google Workspace, MS Teams, Microsoft 365, OneDrive, GoToMeeting, PayPal, Authorize.net, Stripe, Go1, Kaltura, and xAPI. New integrations are frequently added based on user feedback.

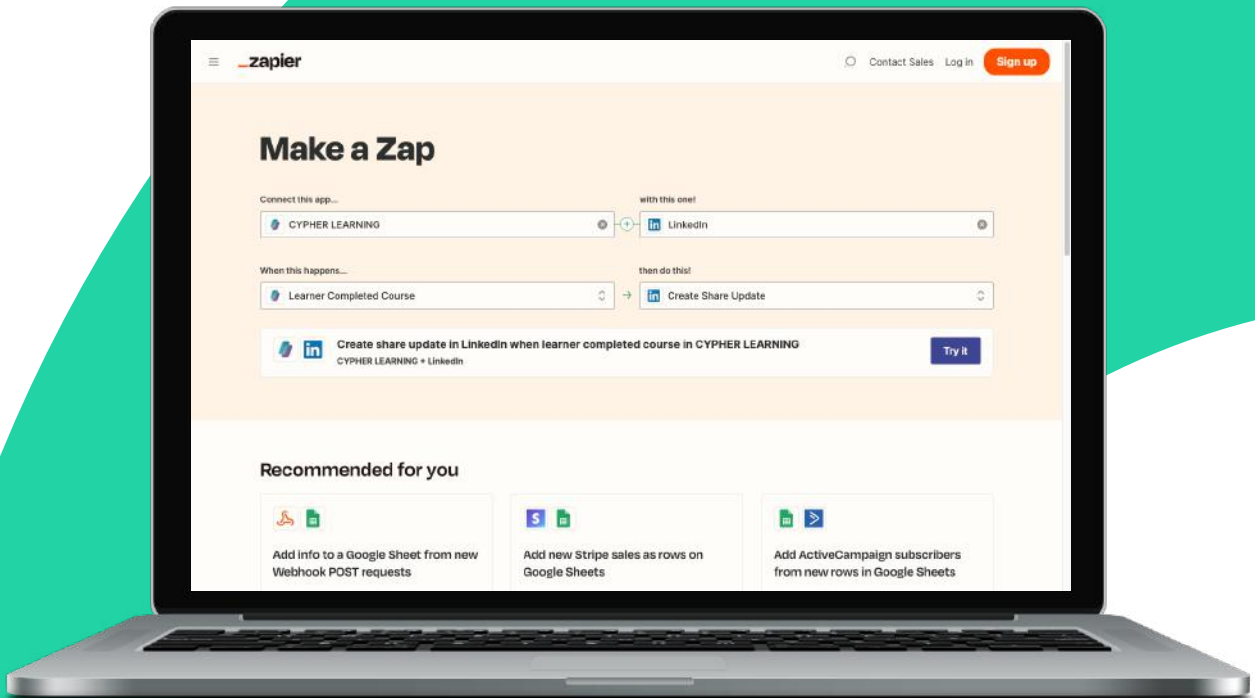
CYPHER includes the App Center, which allows users to customize the platform with hundreds of applets. Create dashboards, make recommendations, develop skills, implement e-commerce, collaborate, and more.

Implement built-in integrations like Turnitin, web conferencing, and chat without needing to write new code or rely on developers. Built-in integrations also include third party course catalog integrations for Coursera, Go1, edX, LinkedIn Learning, and Udemy that can be implemented in the App Center and rendered in the Course Catalog.



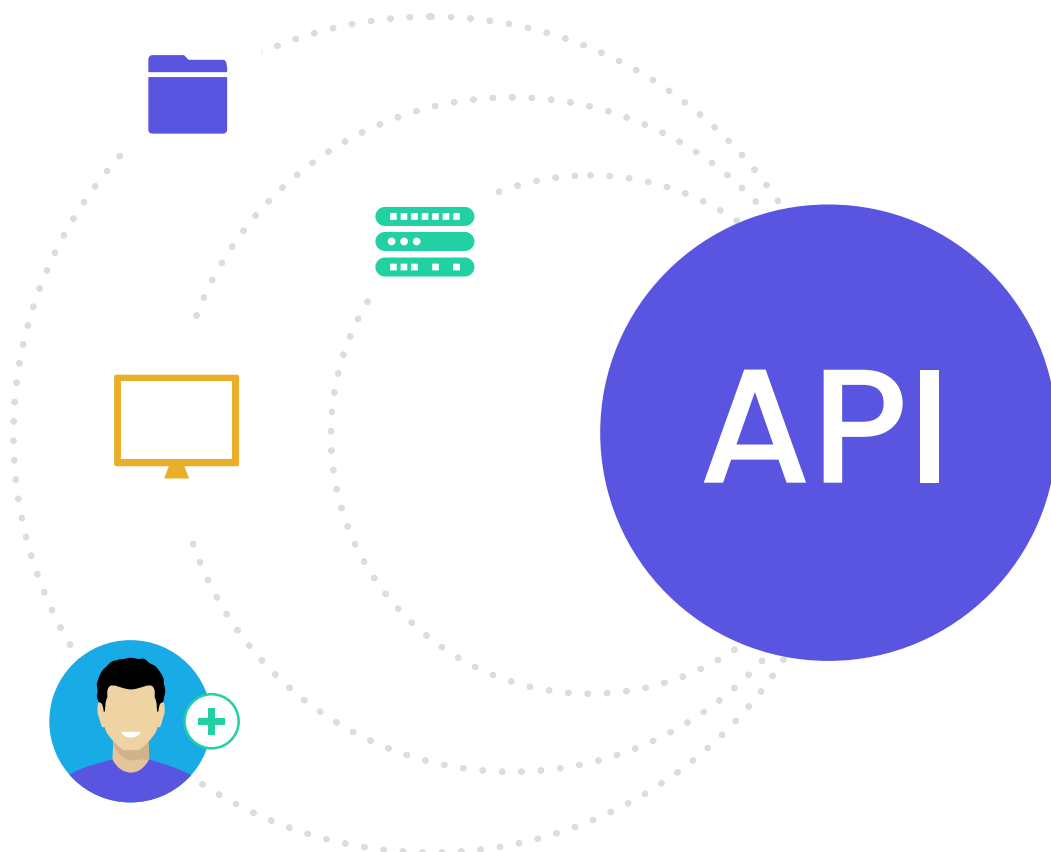
Zapier

Zapier is a popular third-party online automation tool that connects 5,000+ apps and services that simplifies integration with the CYPHER platform, automates your work and enables you to be more productive. Zapier offers both free and paid versions, with the latter offering better performance and reliability. Connect two or more apps with Zapier to quickly and easily automate repetitive tasks without coding or relying on developers to build the integration.



API

API integration is enabled through the App Center as part of the basic platform. Unlike a user interface, APIs interact directly with computer programs. API integrations allow you to retrieve and update information, and perform more sophisticated actions. Because they can be written in any language, for example, dot net, C sharp, and Java script, these programs are extremely accessible. APIs can also perform multiple tasks in parallel, and use logic to perform actions like calling an API and then based on the result of that call, call another API. Note that while API integration enables you a range of customization flexibility, out of all the integration options, integrating APIs typically requires developer skills or support from IT.



Workflow Integrations with Connect

Connect is a new feature of CYPHER that simplifies workflow integration and enables you to seamlessly create workflows between the CYPHER platform and thousands of other enterprise applications including HRIS and CRMs.

Ranging from simple actions to complex workflows, Connect workflow integrations are created with a point-and-click graphical interface and without requiring IT support or programmers to ensure that your data flows smoothly between applications based on your business scenarios.

